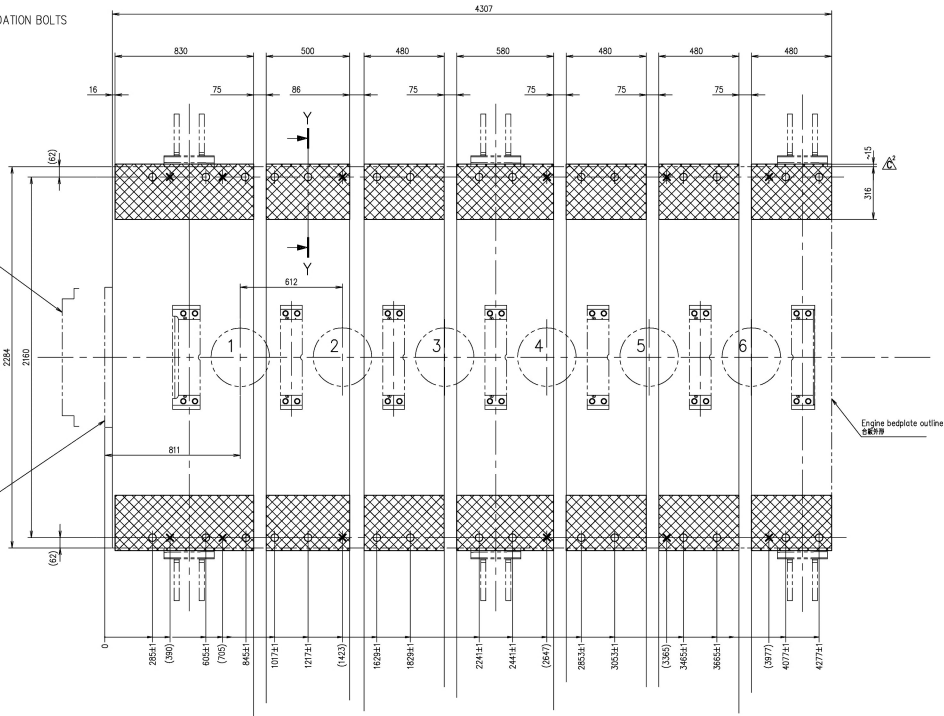


B-B CHOCKING AND DRILLING PLAN FOR FOUNDATION BOLTS
 チョックファイナ、据付ボルト用穴加工図



SURFACE FINISHES		UNDER 1:1	UNDER 1:5	UNDER 1:10	UNDER 1:20	UNDER 1:50	UNDER 1:100	UNDER 1:200	UNDER 1:500
RAZED	117	117	117	117	117	117	117	117	117

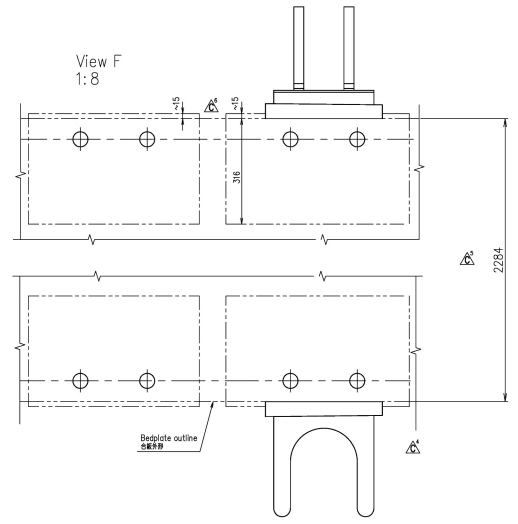
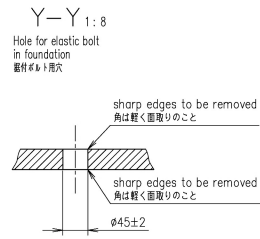
REVISONS		DATE	ZONE	APP. PROVIDED	ED	DRAWN
A	UC11257	2016.12.28	C-5	榊	今中	藤田
B	UC11528	2016.7.2	全面	青田	木下	吉川
C	UC11659	2018.8.29		木下	吉川	甘利

C方式変更管理書
 No. UC10542

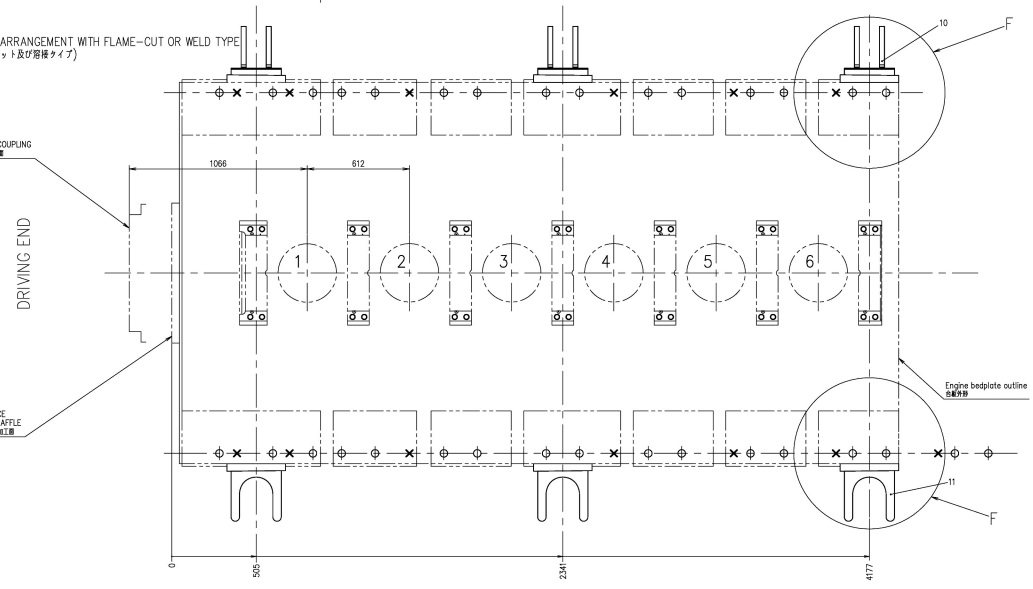
- 備考:
- *1) エポキシレジンチョックの最大許容平均面圧については所定の船級規則に従うよう船務所にて決定のこと
 - *2) X印はジャッキボルト位置を示す
 - *3) レジンチョックの標準厚さは25~60mmとする。最終的な厚さは船務所にて決定のこと。

Remarks:

- *1) The max. permissible mean surface pressure of the epoxy resin chocks is to be determined by the shipyard in accordance with the relevant classification society/rules.
- *2) with X marked positions represent jacking screws.
- *3) Referring to a standardized chock thickness of 25 up to 60mm. Final chock thickness to be determined by shipyard.



B-B ENGINE SIDE STOPPER ARRANGEMENT WITH FLAME-OUT OR WELD TYPE
 機関サイドストッパ配座図(フレームカット及び溶接タイプ)



See drawing 1/3,3/3

COMMON VARIATION OF TOLERANCE (MACHINING)	RATIOS OF NOMINAL DIMENSION (MM)	OVER 0.5	OVER 0.5 TO 1	OVER 1 TO 3	OVER 3 TO 10	OVER 10 TO 30	OVER 30 TO 100	OVER 100 TO 300	OVER 300 TO 1000	OVER 1000 TO 2000	OVER 2000 TO 4000	OVER 4000 TO 6000	OVER 6000 TO 16000
TOLERANCE		+0.1	+0.2	+0.3	+0.5	+0.8	+1.2	+2.0	+2.0	+2.0	+2.0	+2.5	

THIS DRAWING IS THE PROPERTY OF JAPAN ENGINE CORPORATION AND SHALL NOT BE REPRODUCED, NOT BE USED TO FURNISH ANY INFORMATION FOR MAKING DRAWINGS OR APPARATUS EXCEPT FOR THE CASE WHERE JAPAN ENGINE CORPORATION AGREES WITH WRITTEN MATERIALS.

JAPAN ENGINE CORPORATION		6UEC33/35LSE/-Eco		出図先
APPROVED	江戸	APPROVED		会社
CHECKED	今中	CHECKED		製造
DRAWN	藤田	DRAWN		組立
		ENGINE SEATING/FOUNDATION		機
		台板据付要領図		生
		2x3		計
		52-11		
DATE: 2016-07-08		DRAWING NO. U1-1E379C		校
SCALE: 1:16, 1:8, 1:4		REV. NO. 52-11		計
1st ANGLE PROJECTION		JAPAN ENGINE CORPORATION		

