

A

B

C

D

E

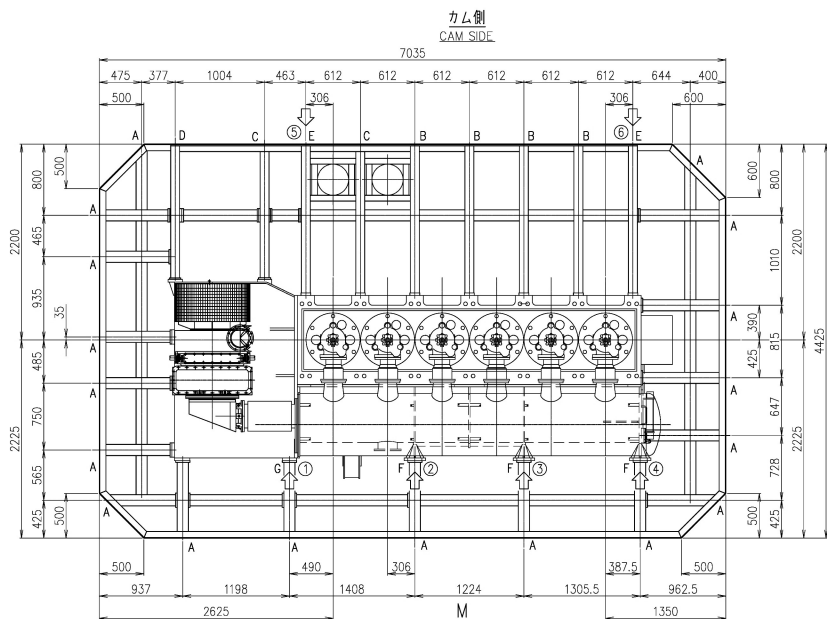
F

G

H

A1

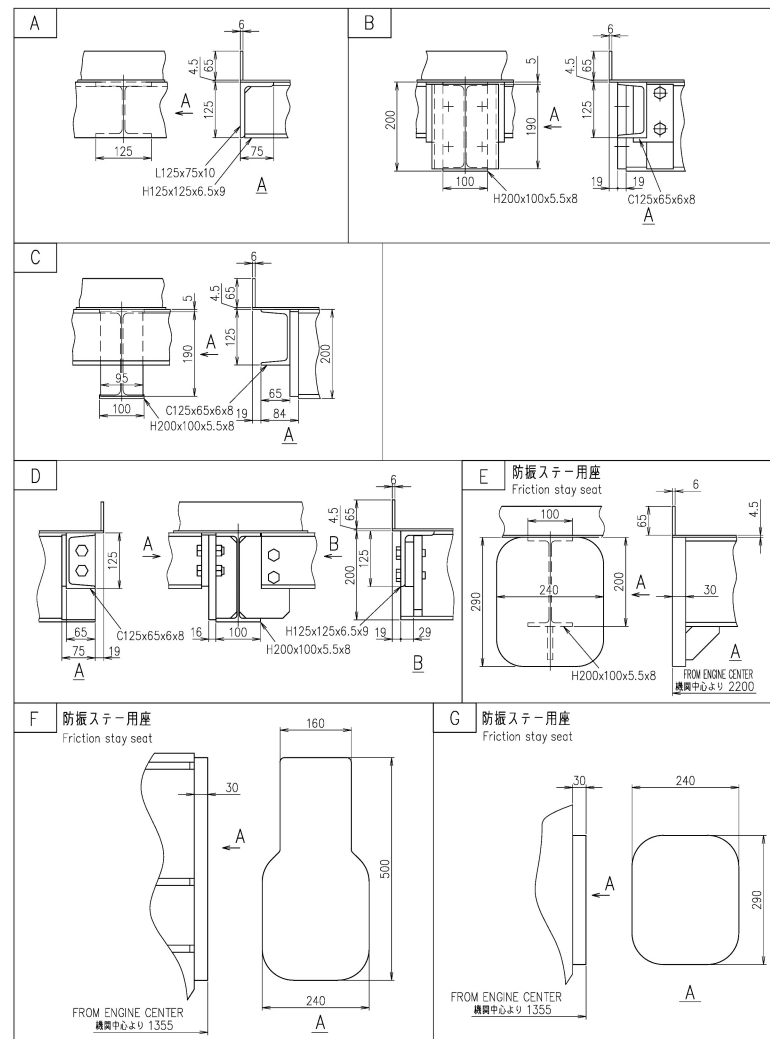
1



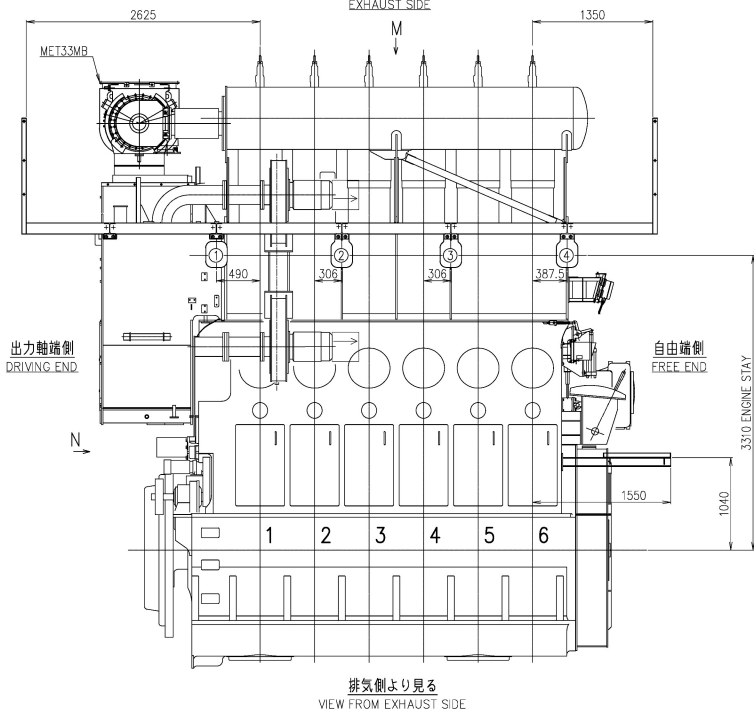
PREVIOUS DRAWING			DRAWING		
U6-6E040			U6-6E040		
REVISIONS					
NO.	LC NO.	DESCRIPTION	DATE	ZONE	APP. CHECK. IT. DRAW.

備考
1.数値は4.5mmを基準とする。
REMARKS
1. PLATE THICKNESS OF PLATFORM THICKNESS 4.5mm

鋁物台板



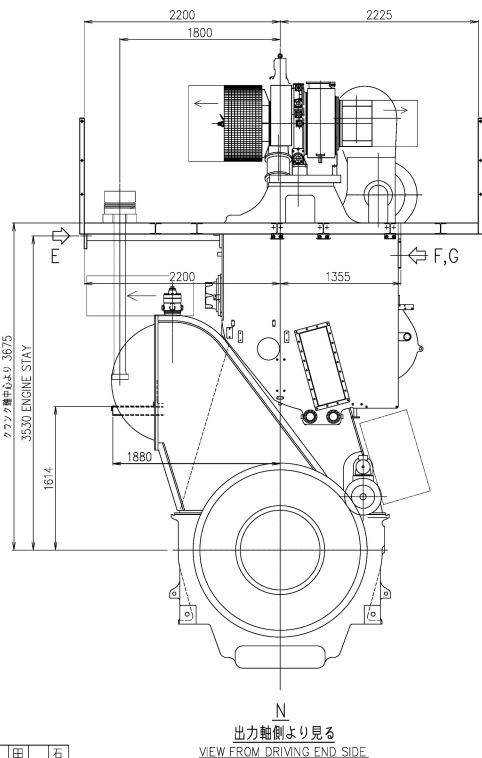
◁ Position of engine stay attachment points.
◁ : 防振ステー配置可能位置



出力軸側
DRIVING END

自由端側
FREE END

排気側より見る
VIEW FROM EXHAUST SIDE



出力軸側より見る
VIEW FROM DRIVING END SIDE

COMMON VARIATION OF TOLERANCE (MACHINE)	RATINGS OF NOMINAL DIMENSION	OVER 0 TO 5	OVER 6 TO 30	OVER 30 TO 120	OVER 120 TO 400	OVER 400 TO 1000	OVER 1000 TO 2000	OVER 2000 TO 4000	OVER 4000 TO 6000	OVER 6000 TO 16000
TOLERANCE		±0.1	±0.2	±0.3	±0.5	±0.8	±1.2	±2.0	±2.0	±2.5

THIS DRAWING IS THE PROPERTY OF JAPAN ENGINE CORPORATION AND SHALL NOT BE REPRODUCED, NOT BE USED TO FURNISH ANY INFORMATION FOR MAKING DRAWINGS OR APPARATUS EXCEPT FOR THE CASE WHERE JAPAN ENGINE CORPORATION AGREES WITH WRITTEN MATERIALS.

1		PLATFORM ARRANGEMENT		格子配置図	
PART NO.	MARK	DESCRIPTION	MATERIALS	QTY	TOTAL WEIGHT
関係部	APPROVED	6UEC33LSE-C2			
APPROVED	江戸	PLATFORM ARRANGEMENT			
CHECKED	今中	(MET33MBx1)			
DRAWN	吉川	格子配置図		1/1	
		(MET33MBx1)		64-01	
1st ANGLE PROJECTION		DATE	2020-10-13	DRAWING NO.	U6-6EA44
		SCALE	1/30, 1/6	REVNO.	
1st ANGLE PROJECTION			U6-6EA44		
Material shall comply with JIS (Japan Industrial Standards).			JAPAN ENGINE CORPORATION		