

1

2

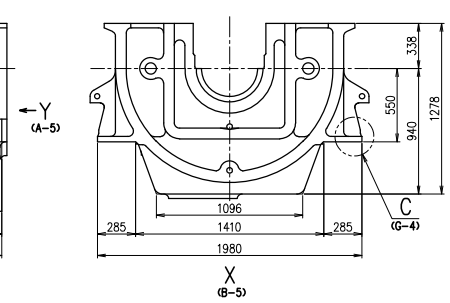
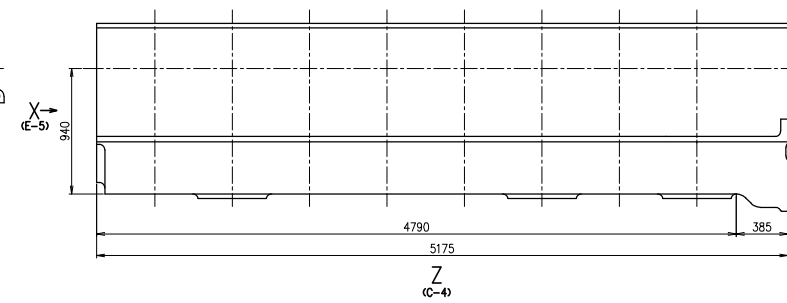
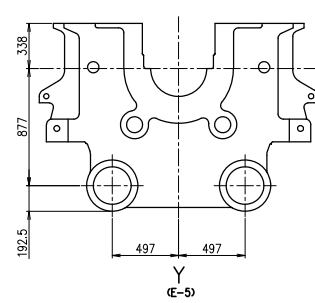
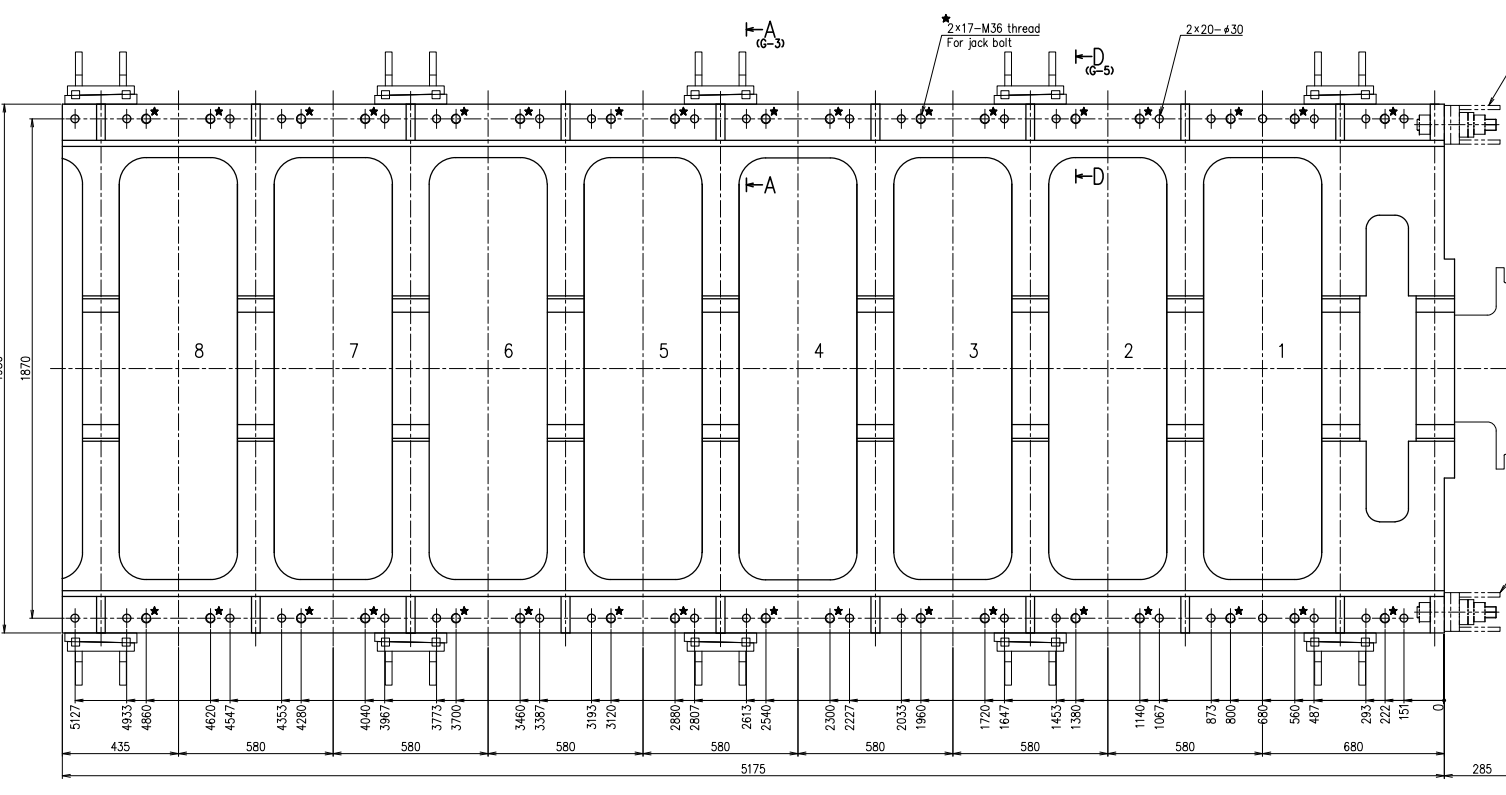
3

4

5

6

1

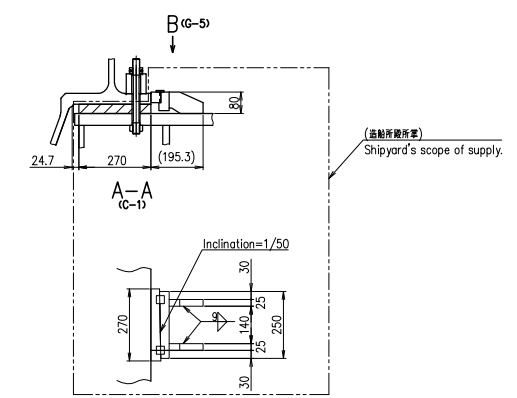


No. of cyl.	8
No. of holding down bolts	40
No. of jack bolts	34

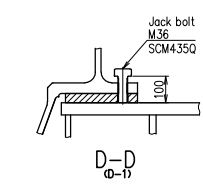
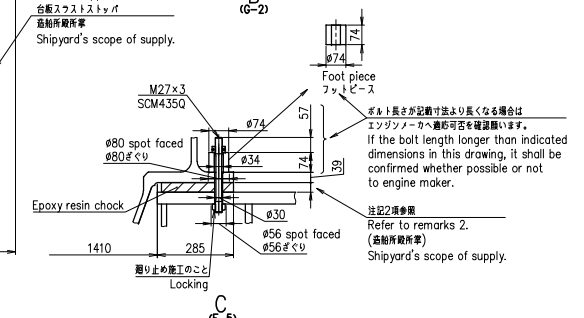
- 注記
- 台板油流とし箇所は、別途台板油流とし要領図を参照のこと。
 - レジンジョッキの寸法（巾、長さ、厚み）は、当該レジンジョッキメーカーと相談の上、決定願います。
 - ★印はジャッキボルトを示す。

- Remarks
- Details of lub. oil outlet shall be referred to "Arrangement of lub. oil outlet".
 - Dimensions (width, length, thickness) of resin chock shall be discussed between shipyard and resin chock supplier.
 - ★ marks indicates jack bolt hole.

Thrust stopper
台板スラストストッパ
造船所製所
Shipyard's scope of supply.



Thrust stopper
台板スラストストッパ
造船所製所
Shipyard's scope of supply.



1		Arrangement of holding down bolt		1	
PART NO.		DESCRIPTION		MATERIALS	
8UEC33LSH		Arrangement of holding down bolt		1/1	
台板据付要領図		台板据付要領図		00-00	
1st ANGLE PROJECTION		SCALE 1/20, 1/10		DRAWING NO. U1-1N036	
DATE 2023.2.16		SCALE 1/20, 1/10		DRAWING NO. U1-1N036	
1st ANGLE PROJECTION		SCALE 1/20, 1/10		DRAWING NO. U1-1N036	
Weld shall comply with JIS (Japan Industrial Standards).		Material shall comply with JIS unless otherwise specified.		JAPAN ENGINE CORPORATION	