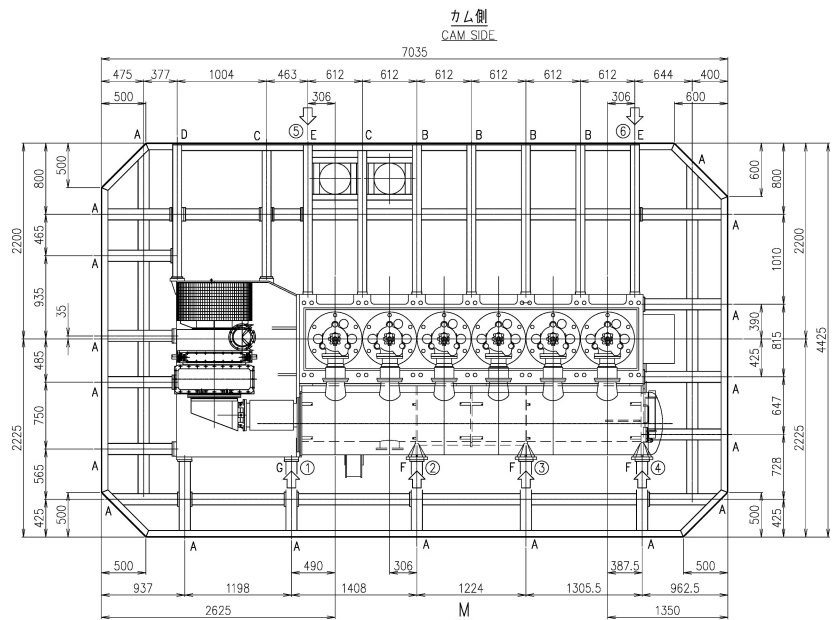
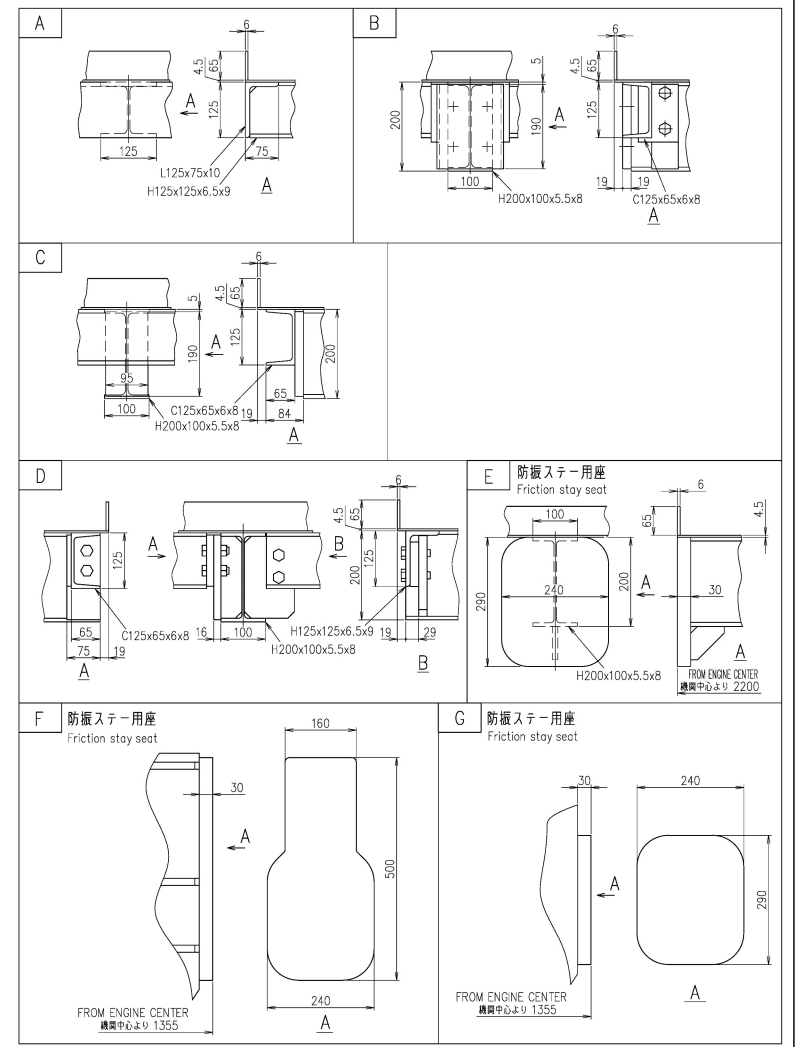


1



備考
1. 数値は4.5mmを基準とする。
REMARKS
1. PLATE THICKNESS OF PLATFORM
THICKNESS 4.5mm

PREVIOUS DRAWING		U6-6E01						
REVISIONS								
NO.	LC NO.	DESCRIPTION	DATE	ZONE	APP. PRODUCT	CHECKED	ED	DRAWN



← Position of engine stay attachment points.
： 防振ステー配置可能位置

1

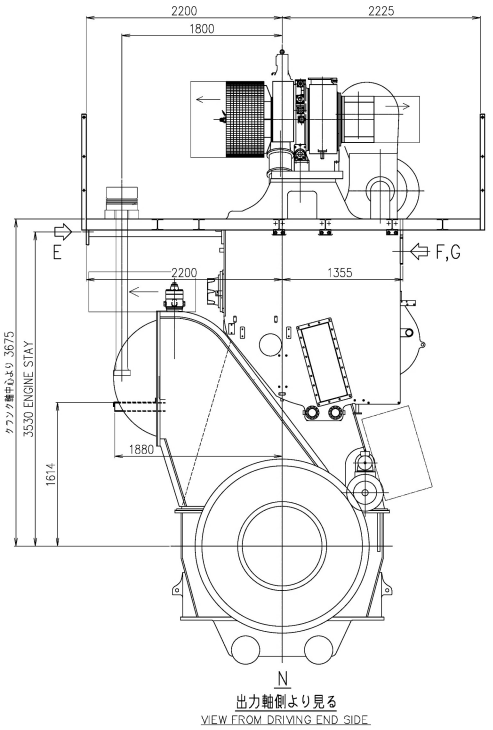
2

3

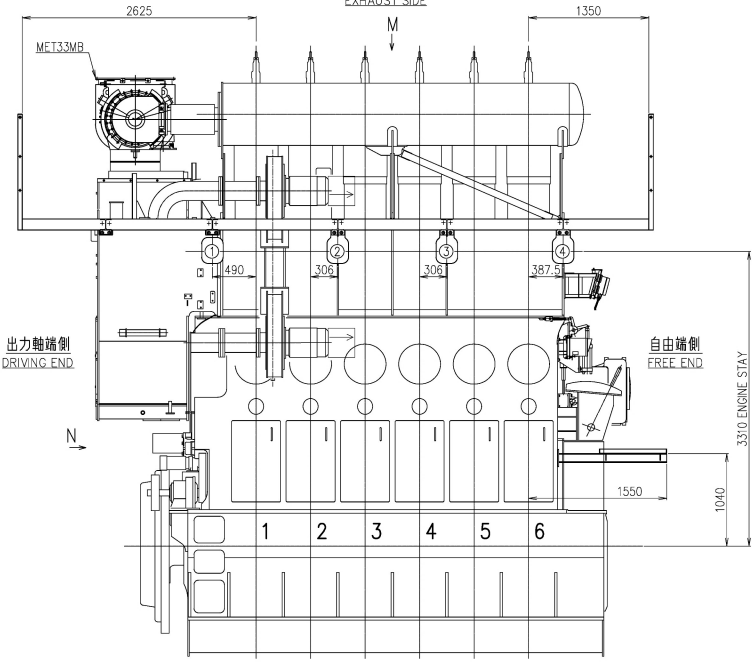
4

5

6



出力軸側より見る
VIEW FROM DRIVING END SIDE



排気側より見る
VIEW FROM EXHAUST SIDE

COMMON VARIATION OF TOLERANCE (MACHINE)	RATINGS OF NOMINAL DIMENSION	OVER 0 TO 30	OVER 30 TO 120	OVER 120 TO 400	OVER 400 TO 1000	OVER 1000 TO 2000	OVER 2000 TO 6000	OVER 6000 TO 16000	OVER 16000 TO 60000
TOLERANCE		±0.1	±0.2	±0.3	±0.5	±0.8	±1.2	±2.0	±2.5

THIS DRAWING IS THE PROPERTY OF JAPAN ENGINE CORPORATION AND SHALL NOT BE REPRODUCED, NOT BE USED TO FURNISH ANY INFORMATION FOR MAKING DRAWINGS OR APPARATUS EXCEPT FOR THE CASE WHERE JAPAN ENGINE CORPORATION AGREES WITH WRITTEN MATERIALS.

1 PLATFORM ARRANGEMENT		格子配置図		出原先		
PART NO.	MARK	DESCRIPTION	MATERIALS	CL. PECK	TOTAL WEIGHT (g)	QUANTITY PER SET
開発部	APPROVED	6UEC35LSE-B2/C1				
江戸	今中	PLATFORM ARRANGEMENT				
		(MET33MB×1)				
CHECKED	DRAWN	格子配置図			1/1	
吉川		(MET33MB×1)			64-01	
1st ANGLE PROJECTION		DATE DRAWN	2020-10-13	DRAWING NO.	U6-6EA37	
		SCALE	1/30, 1/6	REVISION	修 計	
Material shall comply with JIS (Japan Industrial Standards).			JAPAN ENGINE CORPORATION			