

A

B

C

D

E

F

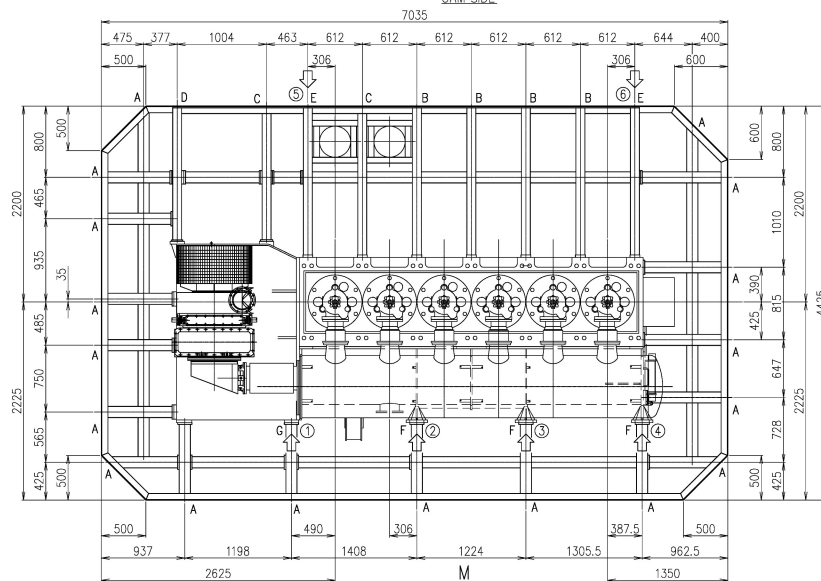
G

H

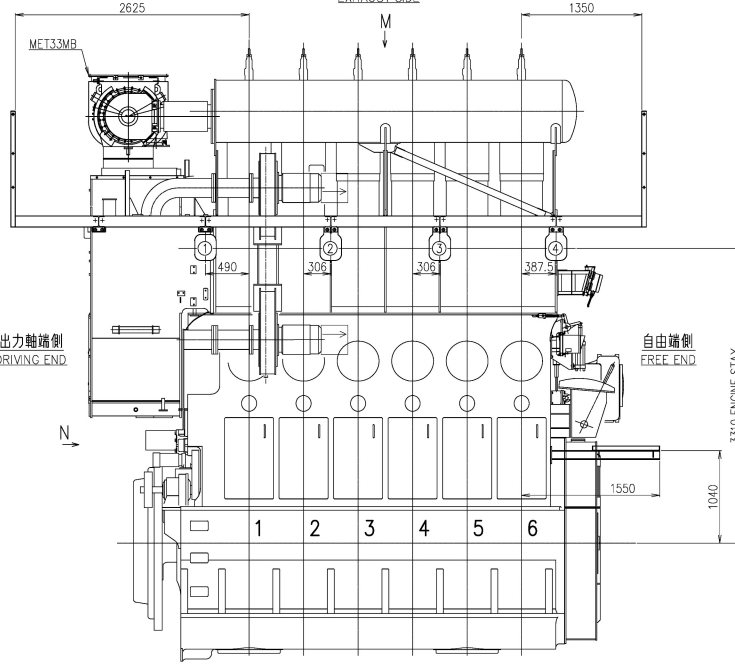
A1

1

カム側
CAM SIDE

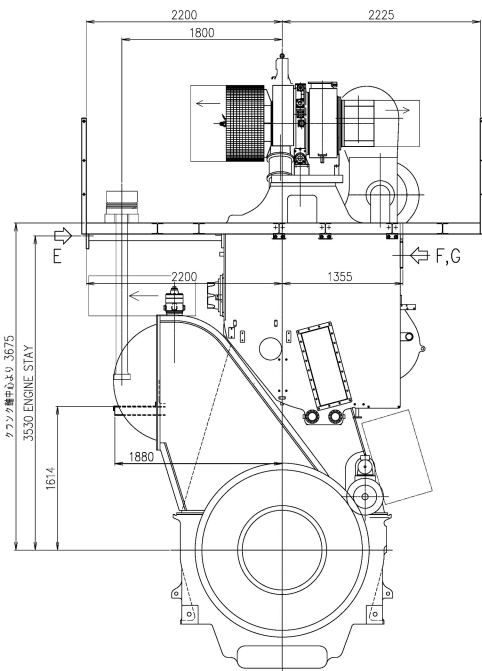


排気側
EXHAUST SIDE



排気側より見る
VIEW FROM EXHAUST SIDE

出力軸側より見る
VIEW FROM DRIVING END SIDE

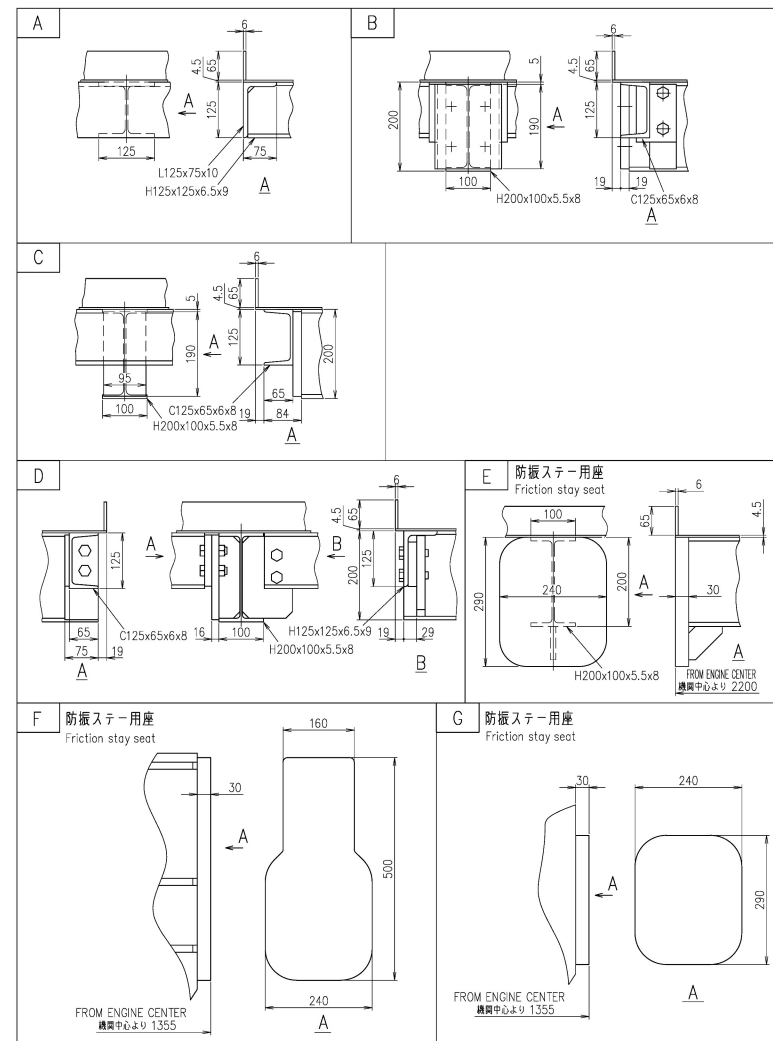


出力軸側より見る
VIEW FROM DRIVING END SIDE

備考
1. 数値は4.5mmを基準とする。

REMARKS
1. PLATE THICKNESS OF PLATFORM THICKNESS 4.5mm

鋸物台板



◀ Position of engine stay attachment points.
◀ 防振ステー配置可能位置

1		PLATFORM ARRANGEMENT		格子配置図	
PART NO.	MARK	DESCRIPTION	MATERIALS	QTY PER SET	TOTAL QUANTITY PER SET
関係部	APPROVED	6UEC35LSE-B2/C1 PLATFORM ARRANGEMENT (ME T33MB x1)			
今中	今中	格子配置図 (ME T33MB x1)		1/1	64-01
CHECKED	吉川	DATE	2020-10-13	DRAWING NO.	U6-6EA40
DRAWN	吉川	SCALE	1/30, 1/6	REVNO.	
1st ANGLE PROJECTION		DATE: 2020-10-13		DRAWING NO.: U6-6EA40	
		SCALE: 1/30, 1/6		REVNO.:	
		DATE: 2020-10-13		DRAWING NO.: U6-6EA40	
		SCALE: 1/30, 1/6		REVNO.:	

COMMON VARIATION OF TOLERANCE (MACHINE)	RATINGS OF NOMINAL DIMENSION	OVER 0 TO 5	OVER 6 TO 30	OVER 30 TO 120	OVER 120 TO 400	OVER 400 TO 1000	OVER 1000 TO 2000	OVER 2000 TO 6000	OVER 6000 TO 16000	OVER 16000 TO 60000
TOLERANCE		±0.1	±0.2	±0.3	±0.5	±0.8	±1.2	±2.0	±3.0	±5.0

THIS DRAWING IS THE PROPERTY OF JAPAN ENGINE CORPORATION AND SHALL NOT BE REPRODUCED, NOT BE USED TO FURNISH ANY INFORMATION FOR MAKING DRAWINGS OR APPARATUS EXCEPT FOR THE CASE WHERE JAPAN ENGINE CORPORATION AGREES WITH WRITTEN MATERIALS.

Must shall comply with JIS (Japan Industrial Standards).

Material shall comply with JIS unless otherwise specified.

JAPAN ENGINE CORPORATION