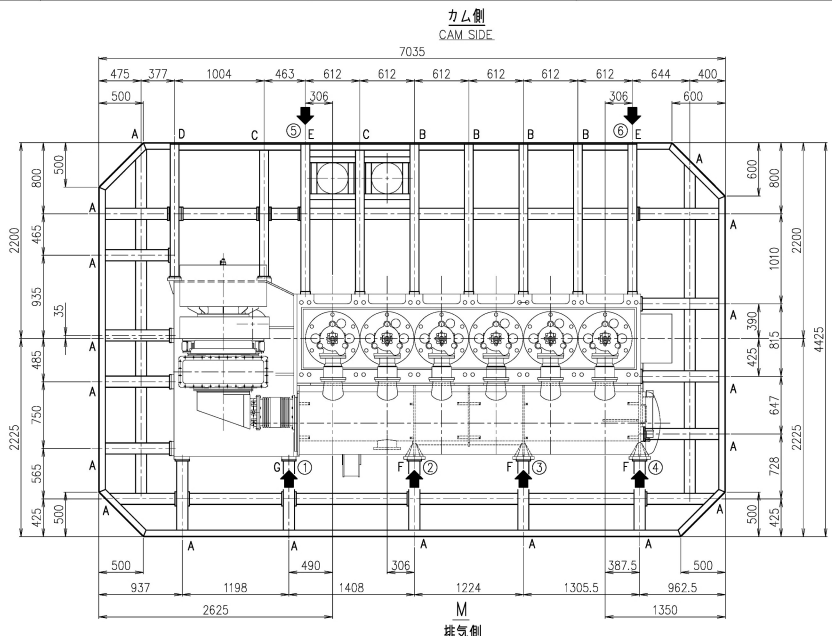


1

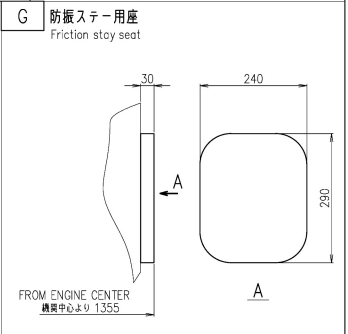
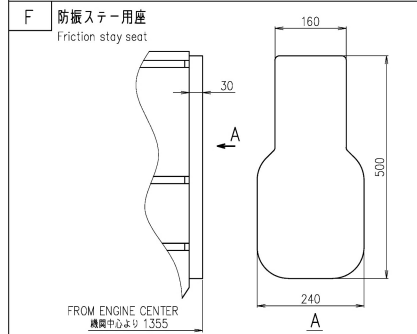
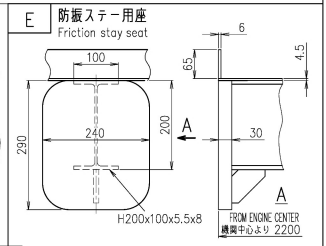
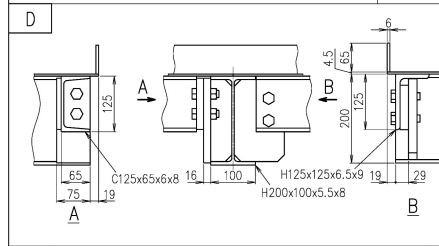
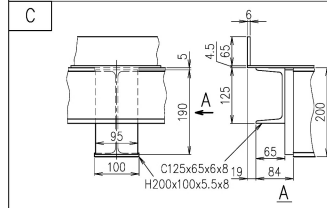
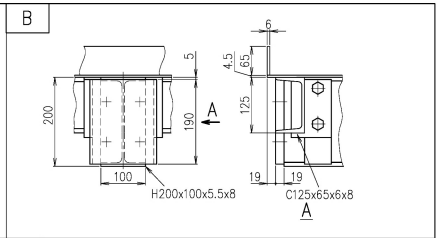
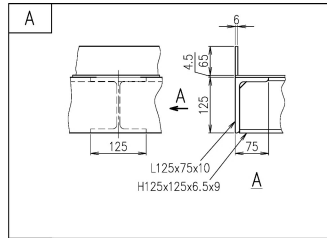


備考  
1.取板は4.5mmを基準とする。

REMARKS  
1. PLATE THICKNESS OF PLATFORM THICKNESS 4.5mm

SURFACE FINISHES		RAINES	UNDER 1.0	UNDER 1.6	UNDER 2.5	UNDER 4.0	UNDER 6.3	UNDER 10.0	ROUGH
REVISIONS		NO.	UC NO.	DESCRIPTION	DATE	ZONE	APP. PREPARED	CHECKED BY	DRAWN
PREVIOUS DRAWING U6-6E826									

鋳物台板



← Position of engine stay attachment points.  
← 防振ステー配置可能位置

1

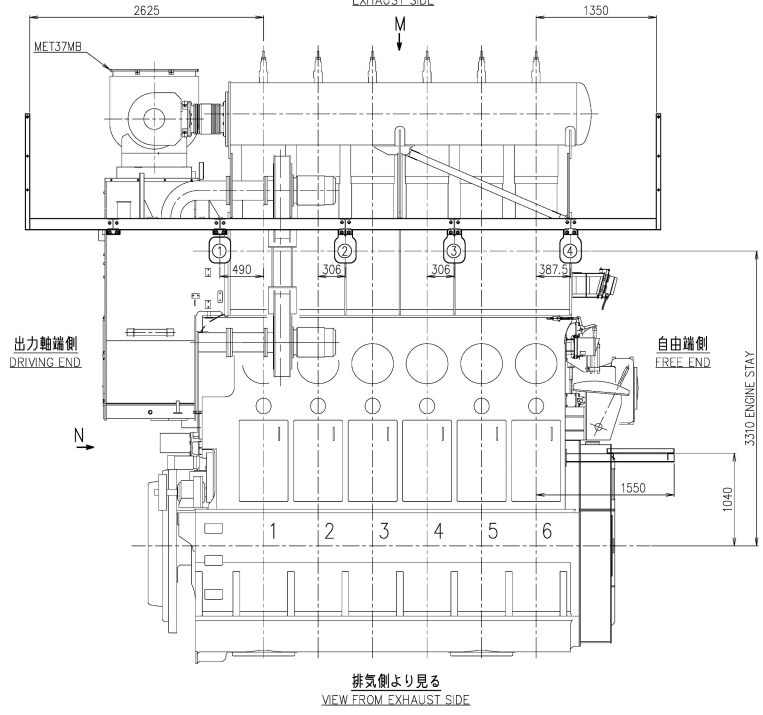
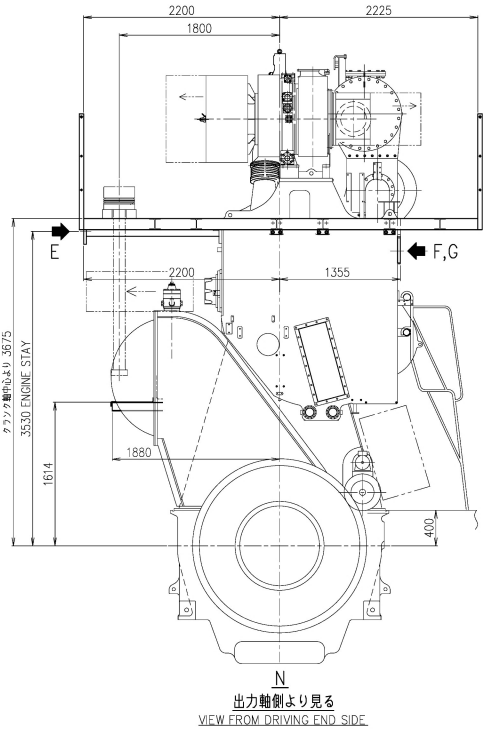
2

3

4

5

6



COMMON VARIATION OF TOLERANCE (QUADRANT) (M.M)	RATINGS OF NORMAL DIMENSION	OVER 0.5 TO 6	OVER 6 TO 30	OVER 30 TO 120	OVER 120 TO 400	OVER 400 TO 1000	OVER 1000 TO 2000	OVER 2000 TO 4000	OVER 4000 TO 8000	OVER 8000 TO 16000
TOLERANCE		+0.1	+0.2	+0.3	+0.5	+0.8	+1.2	+2.0	+2.0	+2.5

ACAD

THIS DRAWING IS THE PROPERTY OF JAPAN ENGINE CORPORATION AND SHALL NOT BE REPRODUCED, NOT BE USED TO FURNISH ANY INFORMATION FOR MAKING DRAWINGS OR APPARATUS EXCEPT FOR THE CASE WHERE JAPAN ENGINE CORPORATION AGREES WITH WRITTEN MATERIALS.

1 PLATFORM ARRANGEMENT 格子配置図		DATE 2020-10-13		DRAWING NO. U6-6EA38			
PART NO.	MARK	DESCRIPTION	MATERIALS	QTY PER SET	IN-PRICE TOTAL WEIGHT (kg)	QUANTITY PER SET	出願先 品社 品社 品社 品社 品社
開発部	江野	6UEC35LSE-B2/C1 PLATFORM ARRANGEMENT (ME13/MB×1)					
CHECKED	吉川	格子配置図 (MET37MB×1)				1/1	
DRAWN	吉川					00-00	
1st ANGLE PROJECTION		SCALE 1/30,1/6		REVISED		校計	
JAPAN ENGINE CORPORATION		JAPAN ENGINE CORPORATION		JAPAN ENGINE CORPORATION		JAPAN ENGINE CORPORATION	