

A

B

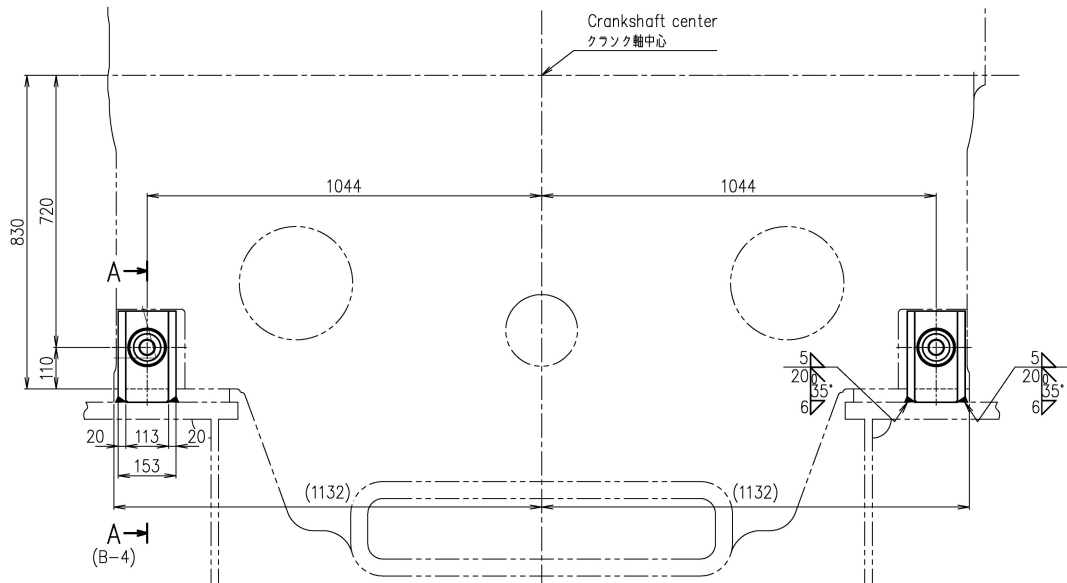
C

D

E

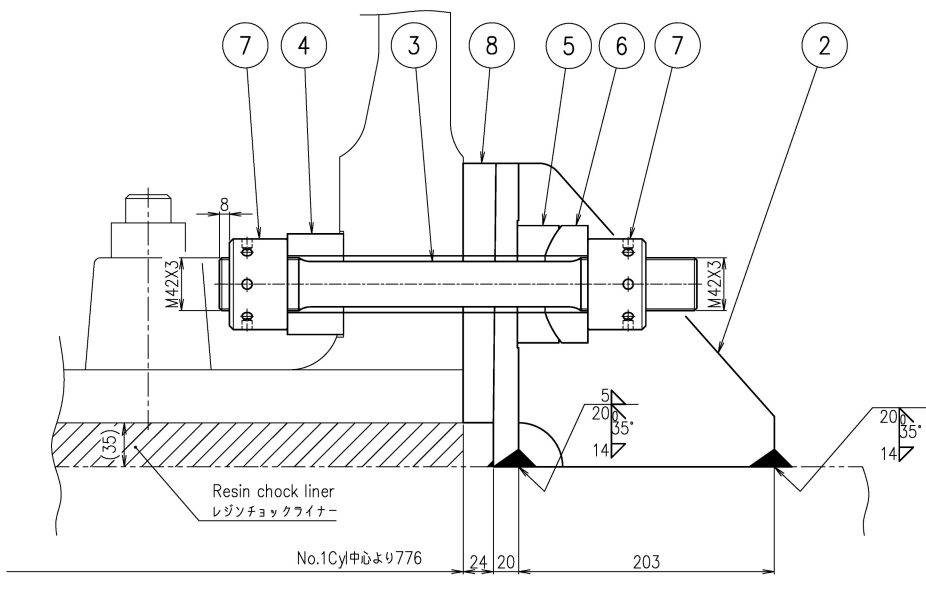
A2

1



View from driving end side
出力軸端側より見る

2



A-A
(A-2)

SURFACE FINISHES	RATINGS	UNDER 0.8	UNDER 6.3	UNDER 25	UNDER 100	NOT-MA CHINED SURFACE	PREVIOUS DRAWING U1-1K007
	▽	▽▽	▽▽▽	▽▽▽▽	▽▽▽▽▽	▽▽▽▽▽▽	
REVISIONS							
NO.	UC NO.	DESCRIPTION	DATE	ZONE	APP- PROVED	CHECK- ED	DRAWN
▲	UC11571	図面種を差し替えた。	2018-07-24		青田	吉川	

PART NO.	MARK	DESCRIPTION	MATERIALS	TEST P.	1-PIECE WEIGHT (kg)	TOTAL QUANTITY PER SET
U1-1E382-01	8	Thrust chock スラストチョック	SS400		6.0 12.0	2
U1-5E732-06	7	Round nut 丸ナット M42x3	S45CQ		0.96 3.84	4
U1-1E380-04	6	Spherical washer 球面座金	S45CQ		1.13 2.26	2
U1-1E380-03	5	Spherical washer 球面座金	S45CQ		1.15 2.3	2
U1-1E380-02	4	Washer 座金 φ80x44.5L	S45CQ		1.2 2.4	2
U1-1E380-01	3	Tension bolt テンションボルト M42x3	SCM435Q		3.4 6.8	2 or SCM440Q
U1-1E381-01	2	Bracket スラスト受け台ブacket			14.8 29.6	2
	1	Thrust stopper assembly スラスト受け用ストッパー組立			59.2	1

開発部 APPROVED	江戸	APPROVED	UEC33/35LSE/-Eco	
今中			Thrust stopper assembly	
CHECKED 飯間	CHECKED	スラスト受け用ストッパー組立		1/1
DRAWN 甘利	DRAWN	52-11		

COMMON VARI- ATION OF TOLERANCE (MACHINING) (M.M)	RATINGS OF NOMINAL DIMENSION		OVER 0.5 TO 6	OVER 6 TO 30	OVER 30 TO 120	OVER 120 TO 400	OVER 400 TO 1000	OVER 1000 TO 2000	OVER 2000 TO 4000	OVER 4000 TO 8000	OVER 8000 TO 16000
	TOLERANCE		+ 0.1	+ 0.2	+ 0.3	+ 0.5	+ 0.8	+ 1.2	+ 2.0	+ 2.0	+ 2.5

ACAD

THIS DRAWING IS THE PROPERTY OF JAPAN ENGINE CORPORATION. AND SHALL NOT BE REPRODUCED, NOT BE USED TO FURNISH ANY INFORMATION FOR MAKING DRAWINGS OR APPARATUS EXCEPT FOR THE CASE WHERE JAPAN ENGINE CORPORATION AGREES WITH WRITTEN MATERIALS.

3d ANGLE PROJECTION	DATE DRAWN	2016.07.15	DRAWING NO.	U1-1E383	REV. NO.	A
	SCALE	1/10,1/3				

Weld shall comply with JIS (Japan Industrial Standards).
Material shall comply with JIS unless otherwise specified.



JAPAN ENGINE CORPORATION

出図先
品証
調連
組立
機械
生計