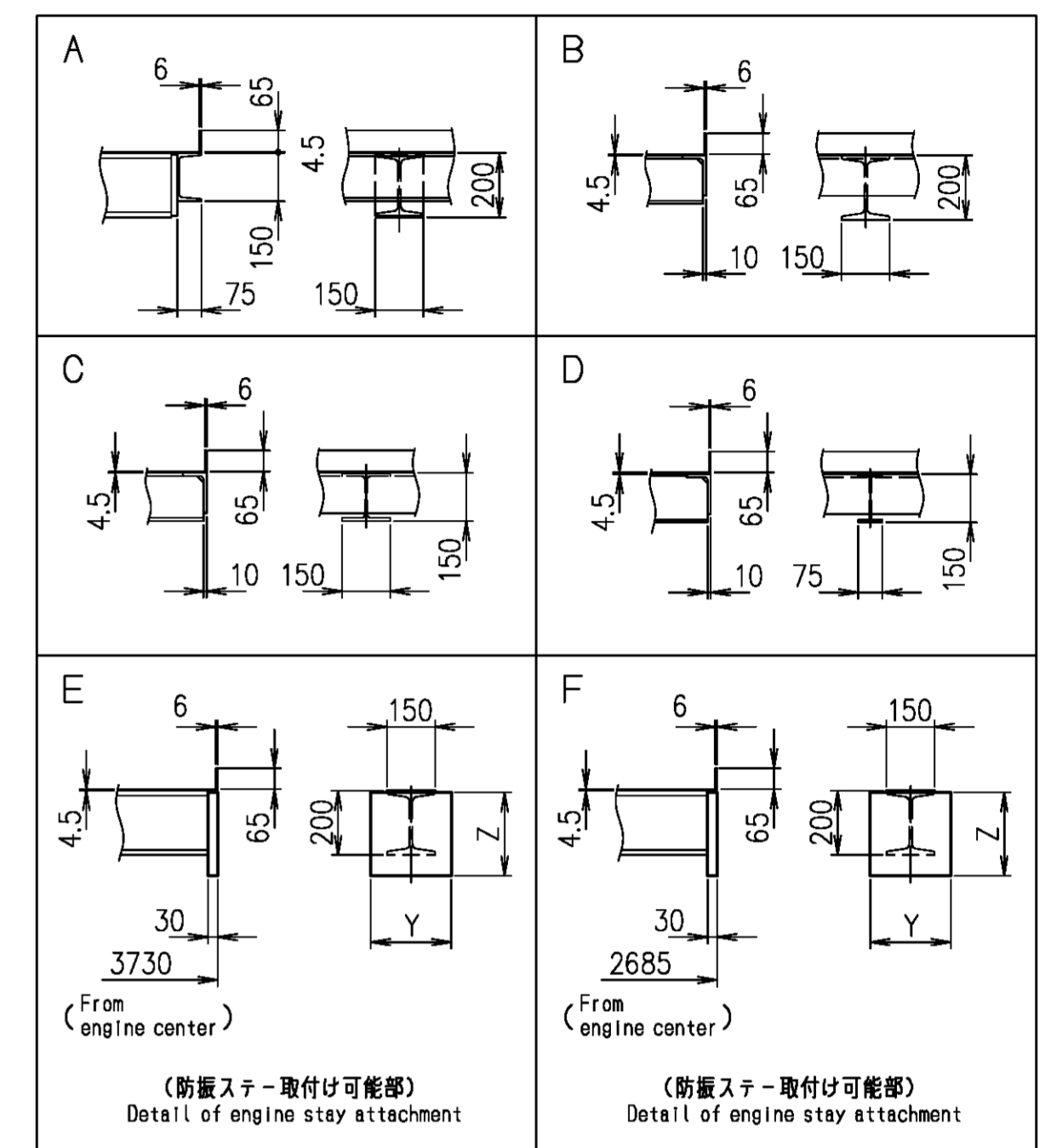
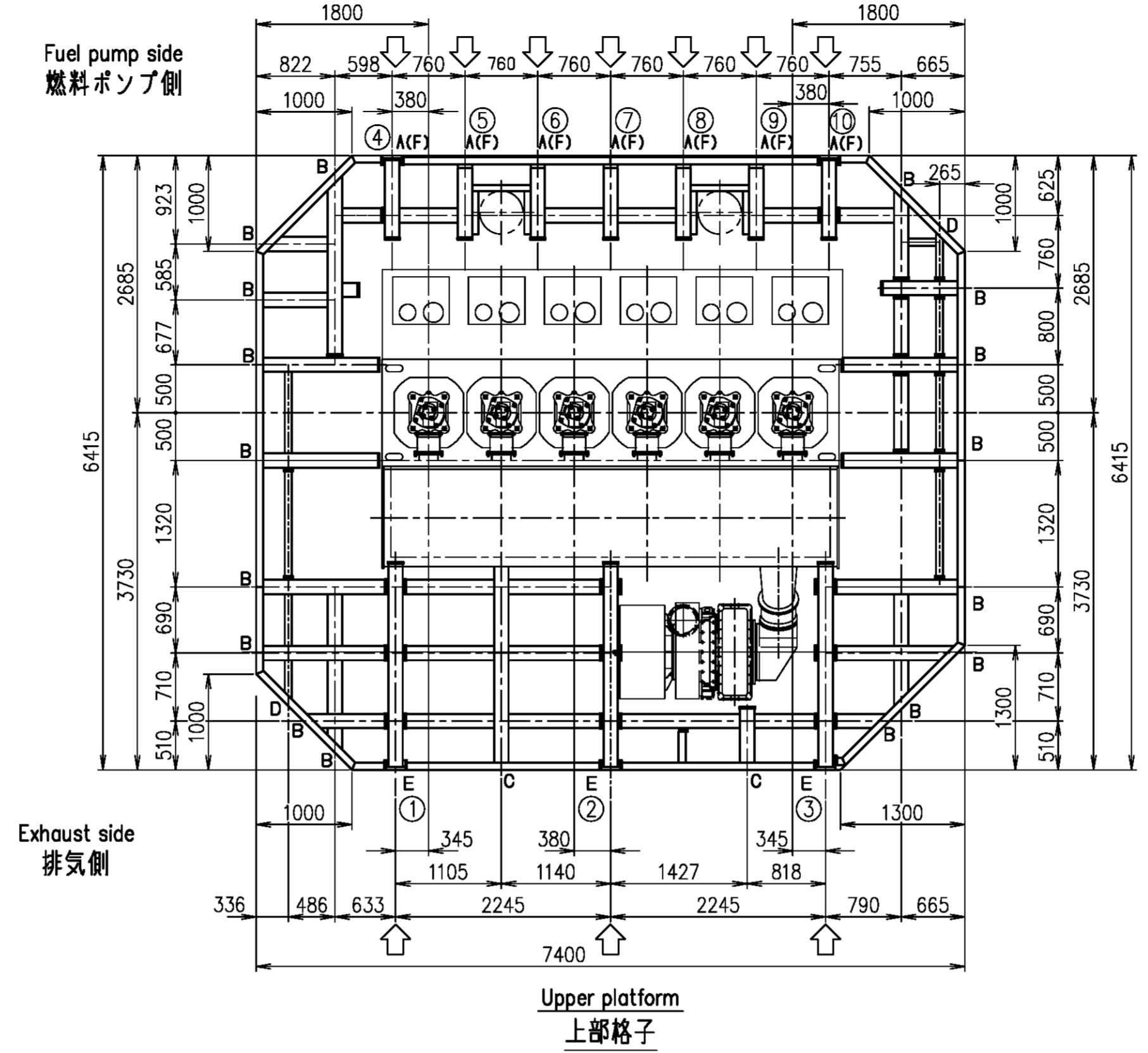
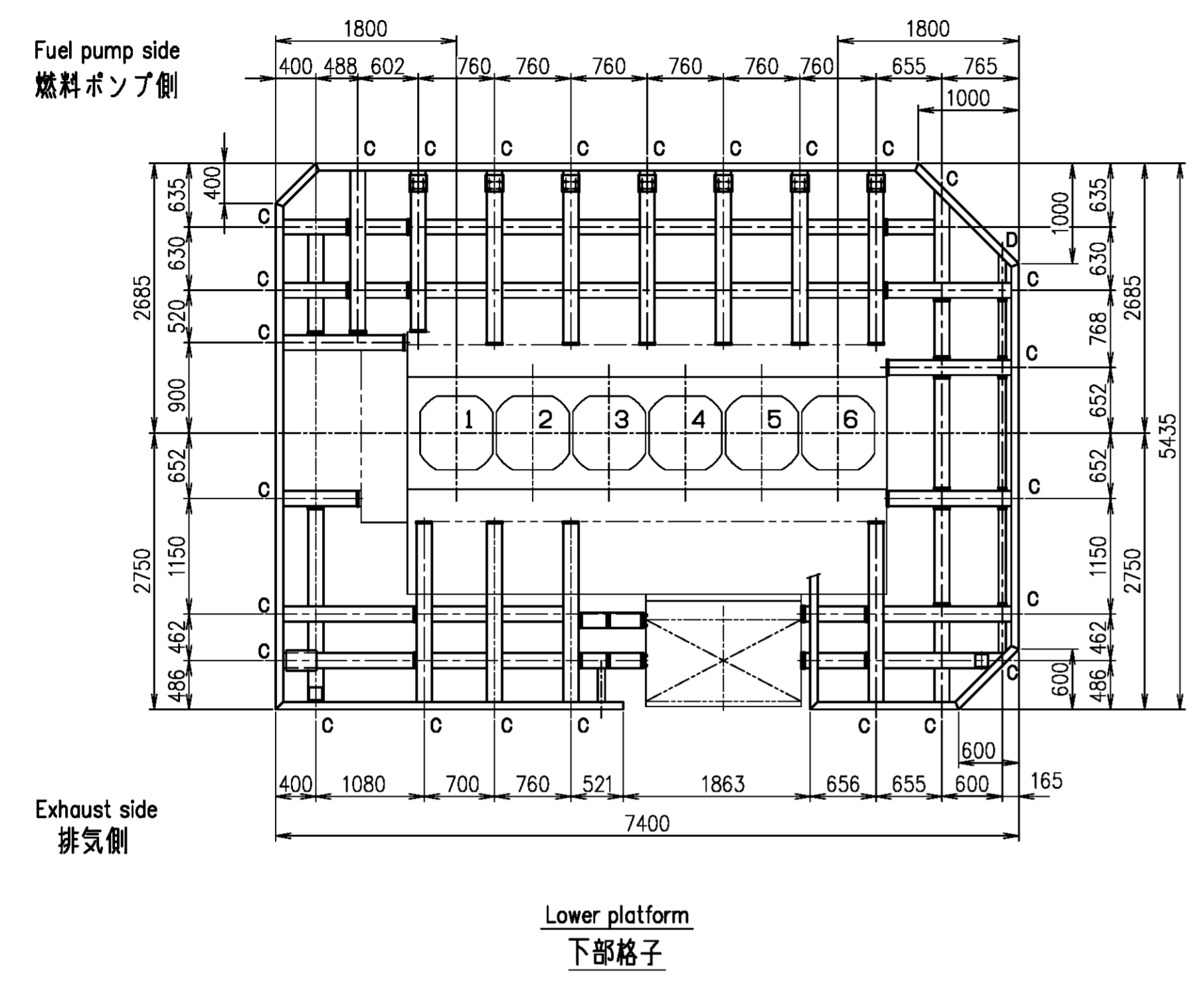


SURFACE FINISH		MATERIAL		PREVIOUS DRAWING	
ROUGHNESS	FINISH	GRADE	TYPE	NO.	U6-6M053
▽	▽	▽	▽	REV. NO.	
REVISIONS					
NO.	UC NO.	DESCRIPTION	DATE	ZONE	APP-PROVED

For Tier2



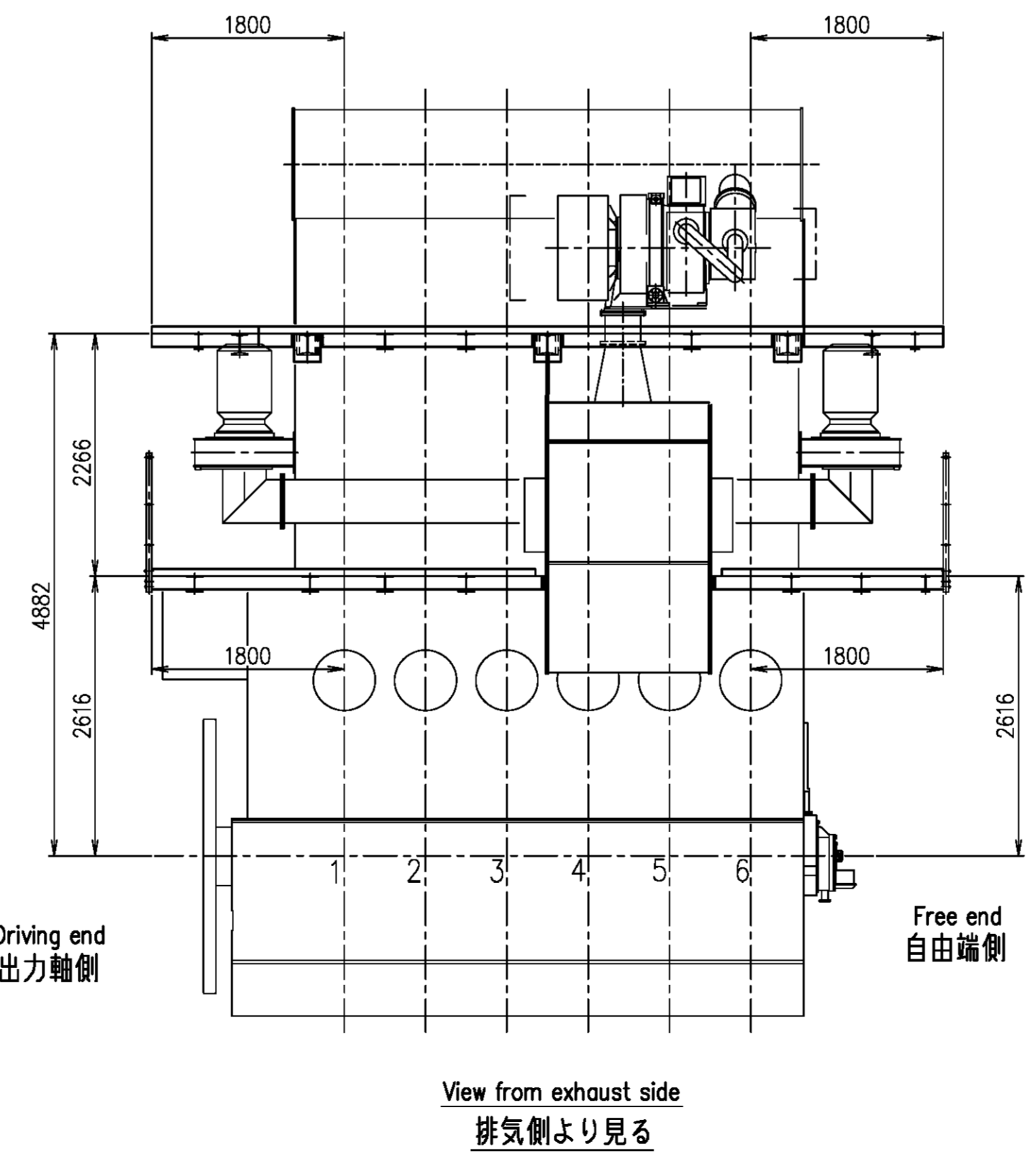
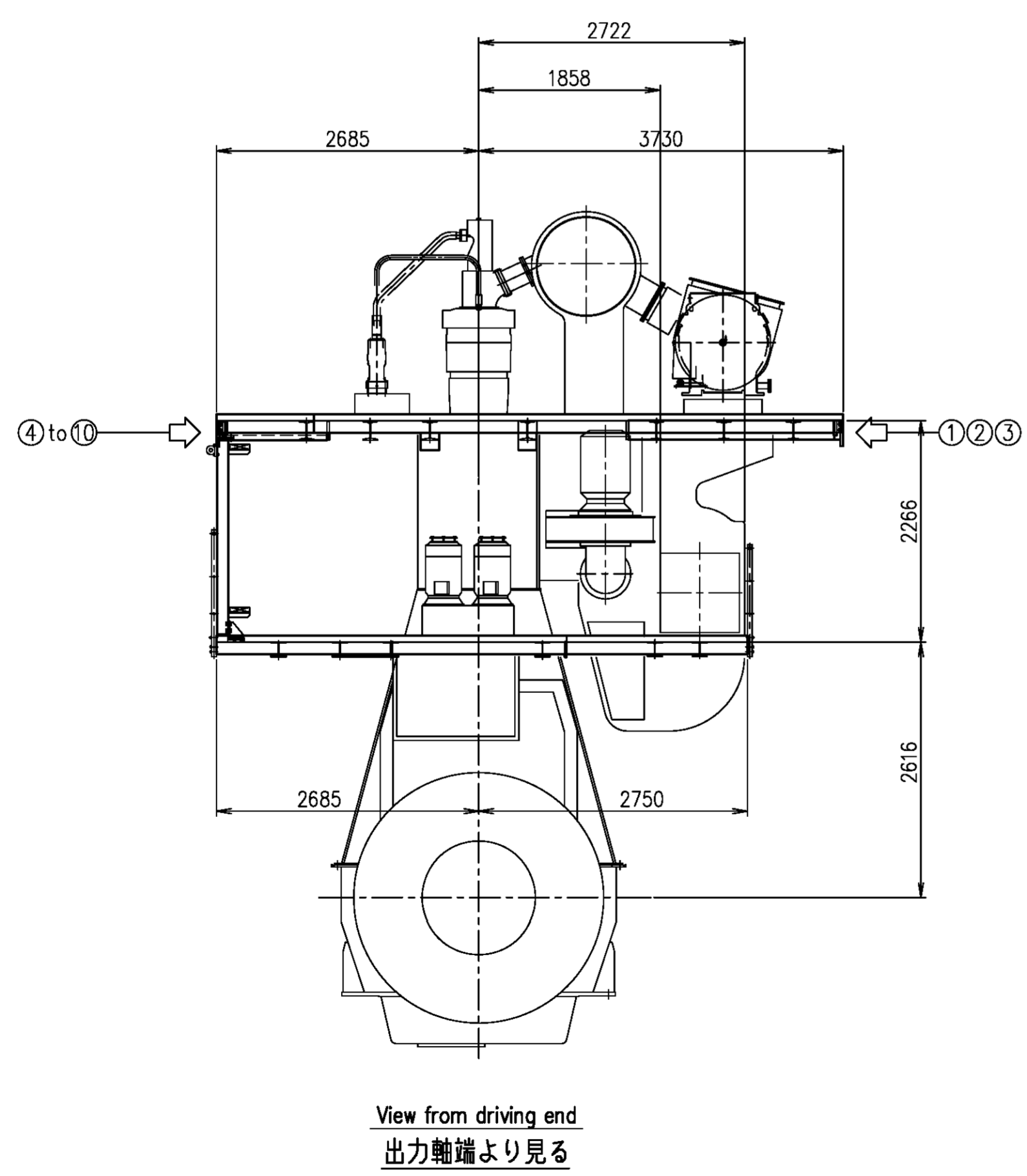
Position of engine stay attachment.
 ◀ : 防振ステー配置可能位置

Type	Total	Y	Z	Exh. side Pump side										○○ : Standard position △ : Optional position Optional position can be applied as below.					
				①	②	③	④	⑤	⑥	⑦	⑧	⑨	⑩						
CASE1 Friction	3	175	200	○	○	○													
CASE2 Hydraulic	4	250	260	○	○	○	○												
CASE3 Friction	4	175	200	○	○	○													
CASE4 Friction	3	175	200				○	△	○	△									
CASE5 Friction	4	175	200				○	△	○	△	○	△							

- 備考
- 次のものは、供給範囲に含まれません。
 (A) 上部格子用外側支柱及び同手摺
 (B) 梯子(フロア↔下部格子及び、下部格子↔上部格子間)
 - 敷板は4.5mmを標準とする。

Remarks

- Following shall be supplied by the shipbuilder.
 (A) Handrail and props on upper platform
 (B) Large stairs between upper-and middle-and lower-platforms.
- Plate thickness of platform
 Upper platform t=4.5
 Lower platform t=4.5



COMMON VARIATION OF TOLERANCE (MM IN LINES) CAL. 1/2	RATINGS OF NOMINAL DIMENSION	OVER 0.5 TO 3	OVER 3 TO 10	OVER 10 TO 30	OVER 30 TO 100	OVER 100 TO 300	OVER 300 TO 1000	OVER 1000 TO 3000	OVER 3000 TO 10000	OVER 10000 TO 30000	OVER 30000 TO 100000	OVER 100000 TO 300000	OVER 300000 TO 1000000
TOLERANCE		+0.1	+0.2	+0.3	+0.5	+0.8	+1.2	+2.0	+2.0	+2.5			

ACAD

1 Platform arrangement 格子配置図		DATE DRAWN 2021.2.12		DRAWING NO. U6-6M160	
PART NO.	NAME	DESCRIPTION	MATERIALS	QTY	REMARKS
開発部		6UEC42LSH-Eco			
APPROVED		Platform arrangement			
江戸		格子配置図			
木下		(MET37MB/EGBx1)			
CHECKED		吉川		1/1	
DRAWN		甘利		64-01	
1st ANGLE PROJECTION		SCALE 1:50		REV. NO.	
Weld shall comply with JIS (Japan Industrial Standards).		JAPAN ENGINE CORPORATION			
Material shall comply with JIS unless otherwise specified.					