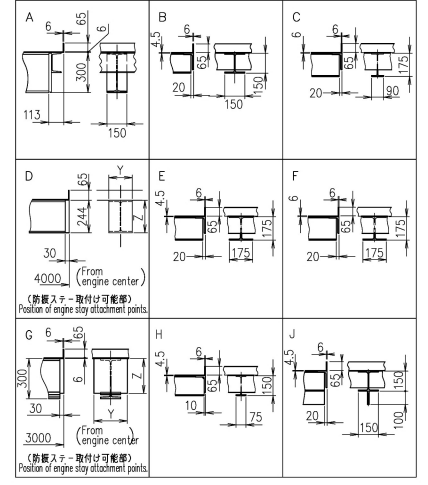
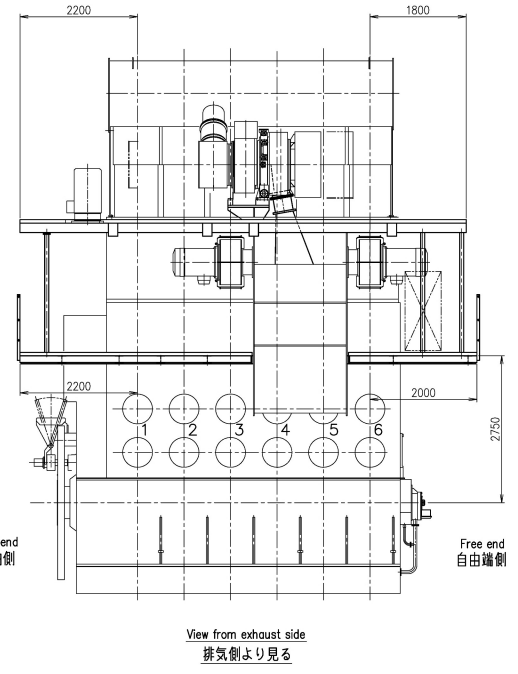
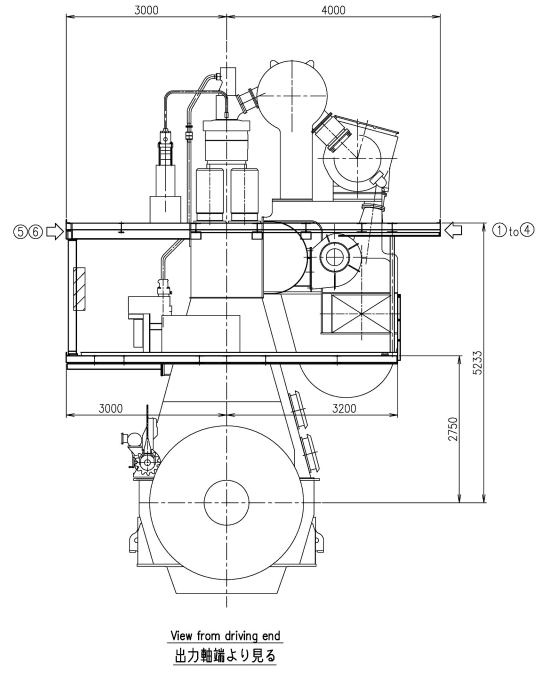
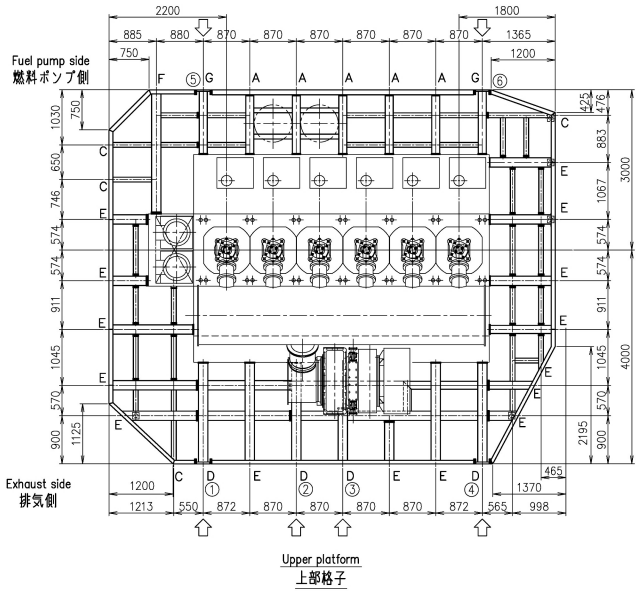
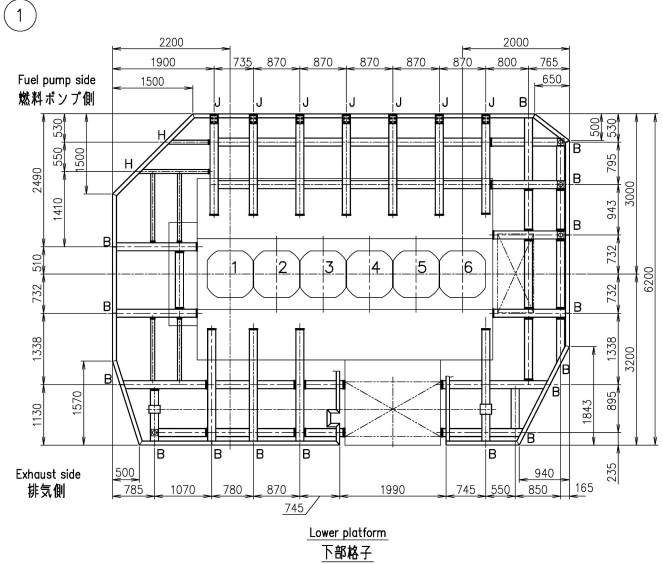


DRAWING NO.		UC NO.		DESCRIPTION		DATE	ZONE	APP. (DRAWN)	CHECK (DR)	DRAWN
PREVIOUS DRAWING U6-6KL27,U6-6KJ98,U1-0K068										
REVISIONS										
NO. UC NO. DESCRIPTION DATE ZONE APP. (DRAWN) CHECK (DR) DRAWN										



Position of engine stay attachment points.  
 ◀ : 防振入テ-配置可能位置

Engine stay type	1	2	3	4	5	6	TOTAL	Y	Z
Friction	○	○	○	○	○	○	3		
CASE1	○	○	○	○	○	○	3	175	244
CASE2	○	○	○	○	○	○	4		
CASE3	○	○	○	○	○	○	4		
Hydraulic	○	○	○	○	○	○	4	250	260

- 備考  
 1. 次のものは、仕様範囲に含まれません。  
 (A) 上層格子用防振支柱及び手摺  
 (B) 梯子(フロア→下層格子及び、下層格子→上層格子)  
 2. 敷板 上層ポンプ側 T6  
 それ以外 T4.5

- Remarks  
 1. Following shall be supplied by the shipbuilder.  
 (A) Handrail and props on upper platform  
 (B) Large stairs between upper- and middle- and lower- platforms.  
 2. Plate thickness of platform  
 Upper platform (pump side) t=6  
 Upper platform (exhaustside) t=4.5  
 Lower platform t=4.5

1 Platform arrangement		格子配置図		1	
PART NO.	MARK	DESCRIPTION	MATERIALS	QTY	1-PIECE TOTAL
開発部	APPROVED	6UEC50LSJ		QUANTITY PER SET	出図先
江戸	APPROVED	Platform arrangement		1/1	品目
木下	CHECKED	格子配置図		64-01	標準
吉川	CHECKED	格子配置図		1/1	設計
DRAWN	DRAWN	DATE	2020.2.13	DRAWING NO.	U6-6KS61
SCALE	1/50	REVISION			

1  
2  
3  
4  
5  
6

COMMON VARIATION OF TOLERANCE (M/M)	RATINGS OF NOMINAL DIMENSION	OVER 0.5 TO 6	OVER 6 TO 30	OVER 30 TO 150	OVER 150 TO 400	OVER 400 TO 1000	OVER 1000 TO 2000	OVER 2000 TO 4000	OVER 4000 TO 8000	OVER 8000 TO 16000
TOLERANCE		+0.1	+0.2	+0.3	+0.5	+0.8	+1.2	+2.0	+2.0	+2.5

ACAD

THIS DRAWING IS THE PROPERTY OF JAPAN ENGINE CORPORATION. AND SHALL NOT BE REPRODUCED, NOT BE USED TO FURNISH ANY INFORMATION FOR MAKING DRAWINGS OR APPARATUS EXCEPT FOR THE CASE WHERE JAPAN ENGINE CORPORATION AGREES WITH WRITTEN MATERIALS.